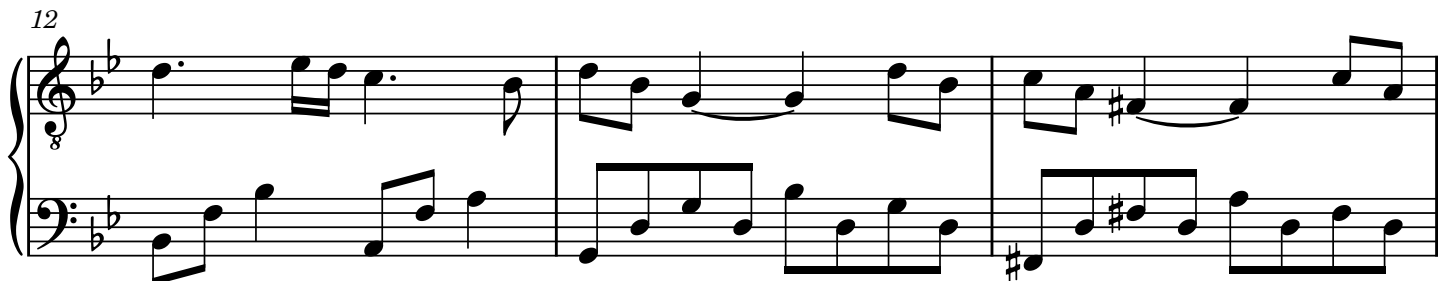


Redeemer

Tiffany Hobson

"...our Savior Jesus Christ; who gave himself for us, that he might redeem us from all iniquity, and purify unto himself a peculiar people, zealous of good works." -Titus 2:13-14

Reverently ♩ = 75



15

Measures 15-17 of the piece. The key signature is B-flat major (two flats). The time signature is 3/4. The music is written for piano in treble and bass staves. Measure 15 starts with a treble clef and a key signature of two flats. The melody in the treble staff consists of quarter notes G4, A4, Bb4, C5, and D5. The bass staff has a steady eighth-note accompaniment. Measure 16 continues the melody with quarter notes E5, D5, C5, Bb4, and A4. Measure 17 features a half note G4 tied to the next measure, followed by a quarter note F4. The bass staff continues with eighth notes.

18

Measures 18-20 of the piece. The key signature is B-flat major. The time signature is 3/4. Measure 18 has a treble clef and a key signature of two flats. The melody in the treble staff consists of quarter notes G4, A4, Bb4, C5, and D5. The bass staff has a steady eighth-note accompaniment. Measure 19 continues the melody with quarter notes E5, D5, C5, Bb4, and A4. Measure 20 features a half note G4 tied to the next measure, followed by a quarter note F4. The bass staff continues with eighth notes.

21

Measures 21-24 of the piece. The key signature is B-flat major. The time signature is 3/4. Measure 21 has a treble clef and a key signature of two flats. The melody in the treble staff consists of quarter notes G4, A4, Bb4, C5, and D5. The bass staff has a steady eighth-note accompaniment. Measure 22 continues the melody with quarter notes E5, D5, C5, Bb4, and A4. Measure 23 features a half note G4 tied to the next measure, followed by a quarter note F4. Measure 24 continues the melody with quarter notes G4, A4, Bb4, C5, and D5. The bass staff continues with eighth notes.

25

Measures 25-28 of the piece. The key signature is B-flat major. The time signature is 4/4. Measure 25 has a treble clef and a key signature of two flats. The melody in the treble staff consists of quarter notes G4, A4, Bb4, C5, and D5. The bass staff has a steady eighth-note accompaniment. Measure 26 continues the melody with quarter notes E5, D5, C5, Bb4, and A4. Measure 27 features a half note G4 tied to the next measure, followed by a quarter note F4. Measure 28 continues the melody with quarter notes G4, A4, Bb4, C5, and D5. The bass staff continues with eighth notes.

29

Measures 29-31: Treble clef, key of B-flat major, 4/4 time. Measures 29-31 feature a melody in the treble with eighth-note triplets and a bass line with eighth notes.

32

Measures 32-34: Treble clef, key of B-flat major, 4/4 time. Measures 32-34 feature a melody in the treble with eighth notes and a bass line with eighth notes.

35

Measures 35-37: Treble clef, key of B-flat major, 4/4 time. Measures 35-37 feature a melody in the treble with eighth notes and a bass line with eighth notes. Measure 37 has a 3/4 time signature change.

38

Measures 38-40: Treble clef, key of B-flat major, 4/4 time. Measures 38-40 feature a melody in the treble with eighth notes and a bass line with eighth notes. Measure 40 has a 3/4 time signature change and a repeat sign.