

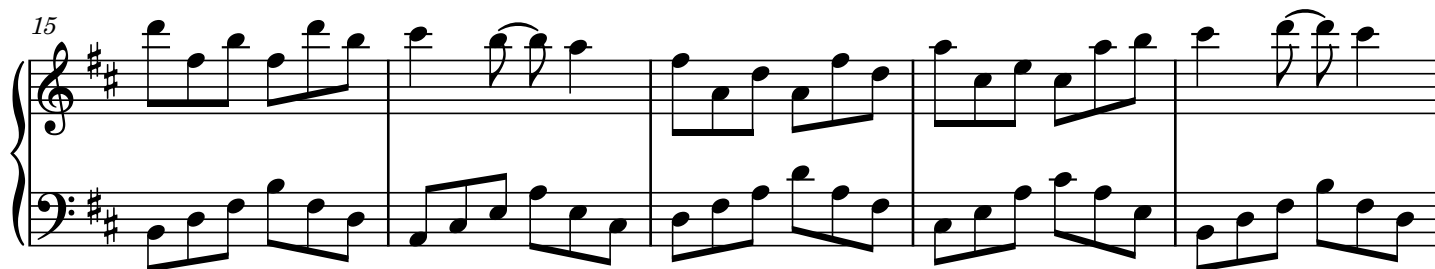
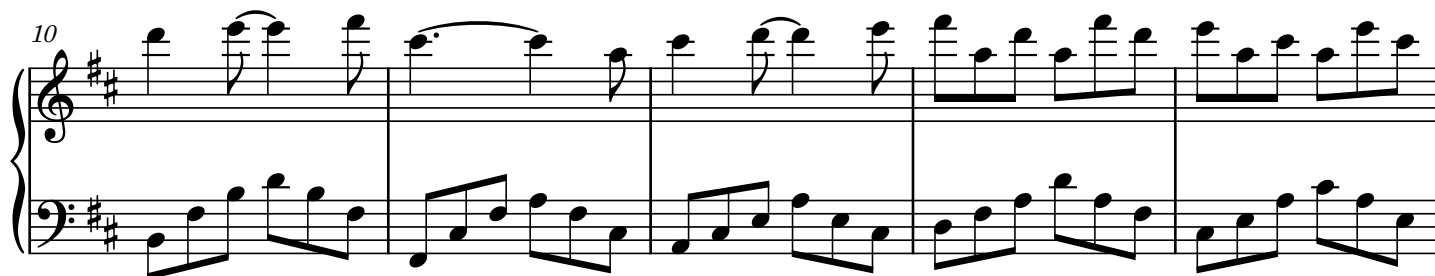
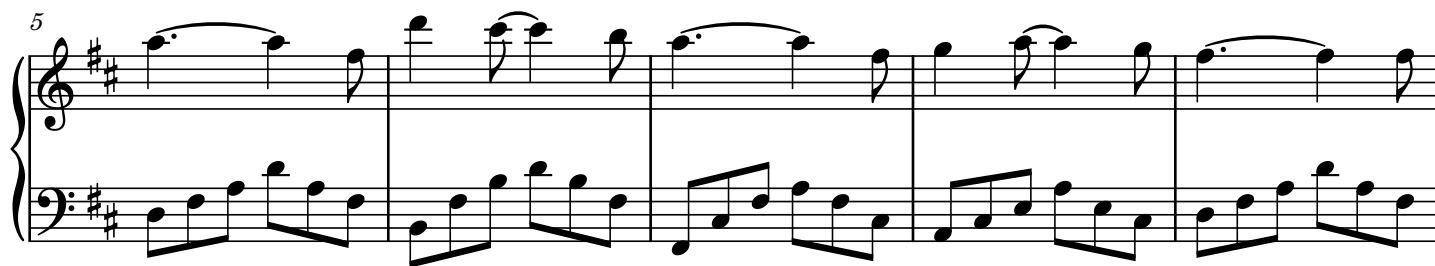
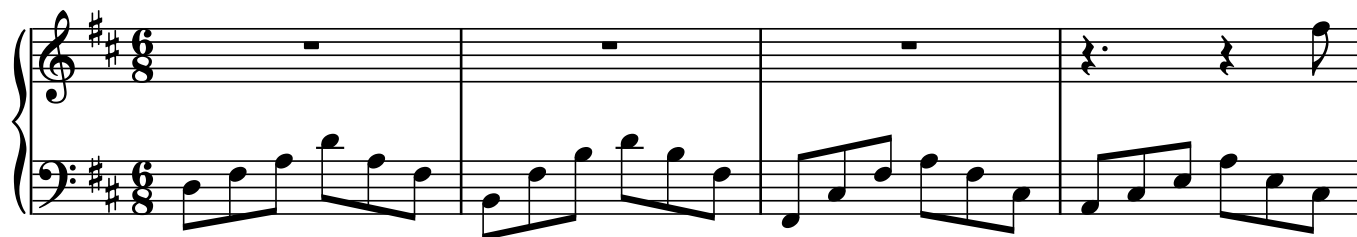
# Grace

Tiffany Hobson

*"But by the grace of God I am what I am; and His grace which was bestowed upon me was not in vain; but I laboured more abundantly than they all: yet not I, but the grace of God which was with me."*

*I Corinthians 15:10*

**Andante moderato** ♩ = 96



20

Measures 20-24 of the piece. The music is in D major (two sharps). The right hand features a melody with eighth and sixteenth notes, often beamed together, and some measures contain a dotted half note. The left hand provides a steady accompaniment with eighth and sixteenth notes.

25

Measures 25-29. The right hand continues the melodic line with various note values and rests. The left hand maintains the accompaniment pattern, with some measures showing a change in the bass line.

30

Measures 30-34. The right hand has a more active melodic line with many sixteenth notes. The left hand continues with eighth and sixteenth note accompaniment.

35

Measures 35-38. Measure 35 shows a change in the right hand melody. Measure 36 has a whole rest in the right hand. Measure 37 features a key signature change to E major (three sharps). Measure 38 continues in E major.

39

Measures 39-43. The music continues in E major. The right hand melody is active with eighth and sixteenth notes. The left hand accompaniment remains consistent with the previous sections.

44

Measures 44-48 of a piano piece in A major. The right hand features a melodic line with eighth and sixteenth notes, while the left hand provides a steady eighth-note accompaniment.

49

Measures 49-52. Measure 51 includes an octave extension marked *8va* in the right hand.

53

Measures 53-56. Measure 53 begins with an eighth rest followed by an eighth note, indicated by a circled 8. A dashed line spans measures 53-54.

57

Measures 57-60. Measure 57 begins with an eighth rest followed by an eighth note, indicated by a circled 8. A dashed line spans measures 57-58.

61

Measures 61-64. Measure 62 contains a whole rest. Measure 64 ends with a double bar line and a fermata.