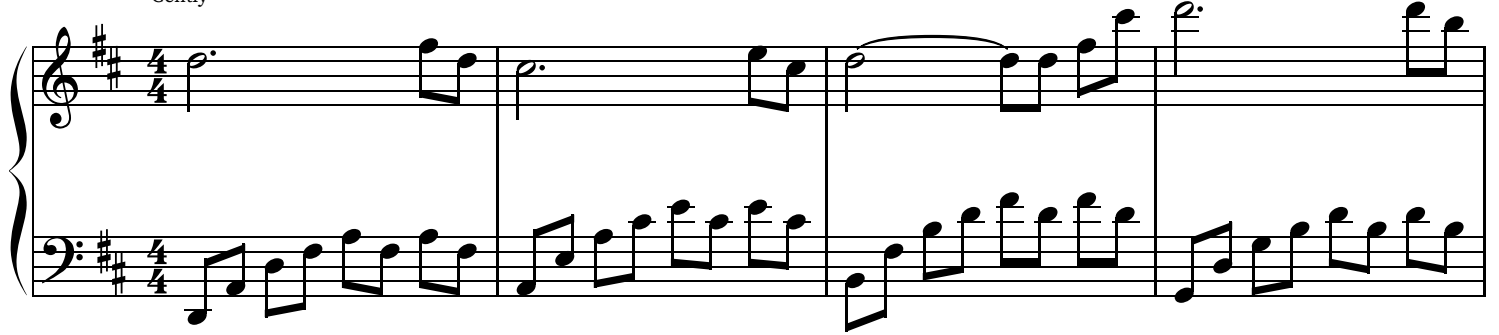


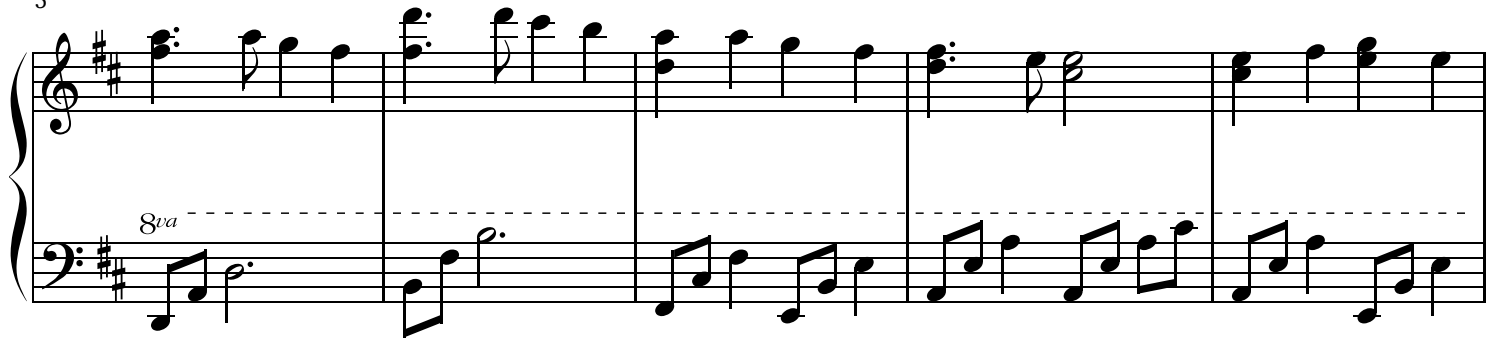
Lord, I Would Follow Thee

K. Newell Dayley
Arranged by Tiffany Hobson

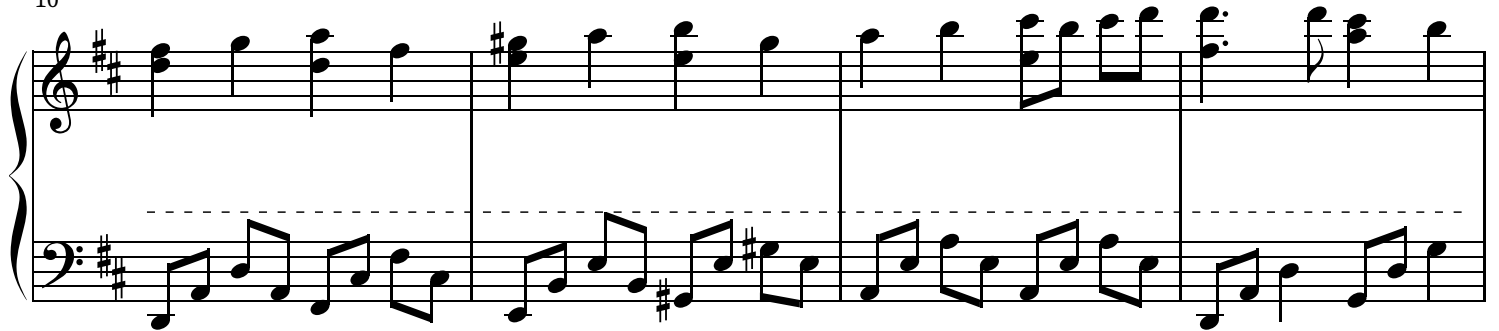
Gently



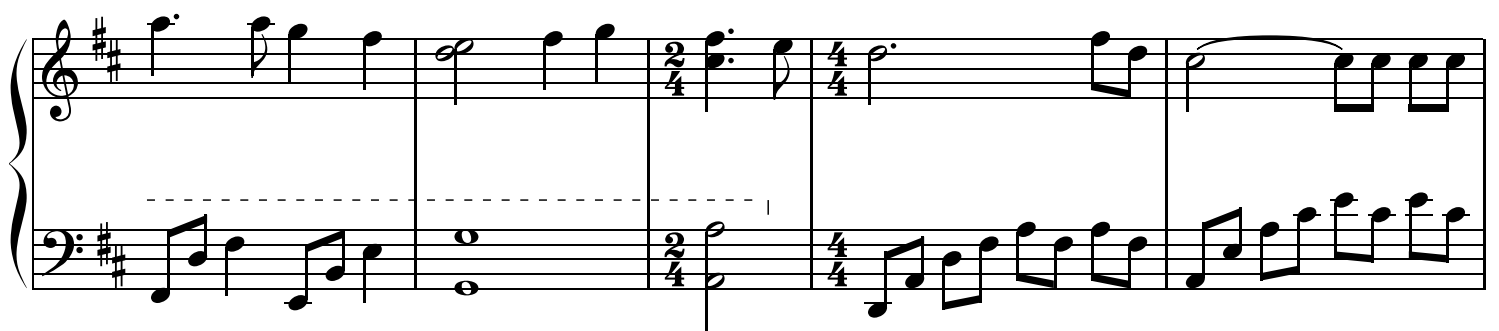
5



10



14



System 19-22: Four measures of music. The treble clef staff begins with a half note G4, followed by eighth notes A4, B4, and C5. The bass clef staff has a continuous eighth-note line: G3, A3, B3, C4, D4, E4, F4, G4, A4, B4, C5, D5, E5, F5, G5, A5, B5, C6. Measure 20 features a half note G4 in the treble and a half note G3 in the bass. Measure 21 has a half note G4 in the treble and a half note G3 in the bass. Measure 22 has a half note G4 in the treble and a half note G3 in the bass.

23

System 23-26: Four measures of music. The treble clef staff has a half note G4, followed by eighth notes A4, B4, and C5. The bass clef staff has a continuous eighth-note line: G3, A3, B3, C4, D4, E4, F4, G4, A4, B4, C5, D5, E5, F5, G5, A5, B5, C6. Measure 24 has a half note G4 in the treble and a half note G3 in the bass. Measure 25 has a half note G4 in the treble and a half note G3 in the bass. Measure 26 has a half note G4 in the treble and a half note G3 in the bass.

27

System 27-30: Four measures of music. The treble clef staff has a half note G4, followed by eighth notes A4, B4, and C5. The bass clef staff has a continuous eighth-note line: G3, A3, B3, C4, D4, E4, F4, G4, A4, B4, C5, D5, E5, F5, G5, A5, B5, C6. Measure 28 has a half note G4 in the treble and a half note G3 in the bass. Measure 29 has a half note G4 in the treble and a half note G3 in the bass. Measure 30 has a half note G4 in the treble and a half note G3 in the bass.

31

System 31-33: Three measures of music. The treble clef staff has a half note G4, followed by eighth notes A4, B4, and C5. The bass clef staff has a continuous eighth-note line: G3, A3, B3, C4, D4, E4, F4, G4, A4, B4, C5, D5, E5, F5, G5, A5, B5, C6. Measure 32 has a half note G4 in the treble and a half note G3 in the bass. Measure 33 has a half note G4 in the treble and a half note G3 in the bass.

34

System 34-37: Four measures of music. The treble clef staff has a half note G4, followed by eighth notes A4, B4, and C5. The bass clef staff has a continuous eighth-note line: G3, A3, B3, C4, D4, E4, F4, G4, A4, B4, C5, D5, E5, F5, G5, A5, B5, C6. Measure 35 has a half note G4 in the treble and a half note G3 in the bass. Measure 36 has a half note G4 in the treble and a half note G3 in the bass. Measure 37 has a half note G4 in the treble and a half note G3 in the bass. Measure 38 has a half note G4 in the treble and a half note G3 in the bass.