

# My New Beginning

words and music by  
Jennifer Barton Hoopes

Musical notation for the first system, including treble and bass staves with chords Gm, F/A, and Eb.

Musical notation for the second system, including a treble staff with chords Eb, Bb, Eb, and Bb.

Musical notation for the third system, including treble and bass staves with chords Eb and Bb.

Musical notation for the fourth system, including a treble staff with chords Bb and Gm.

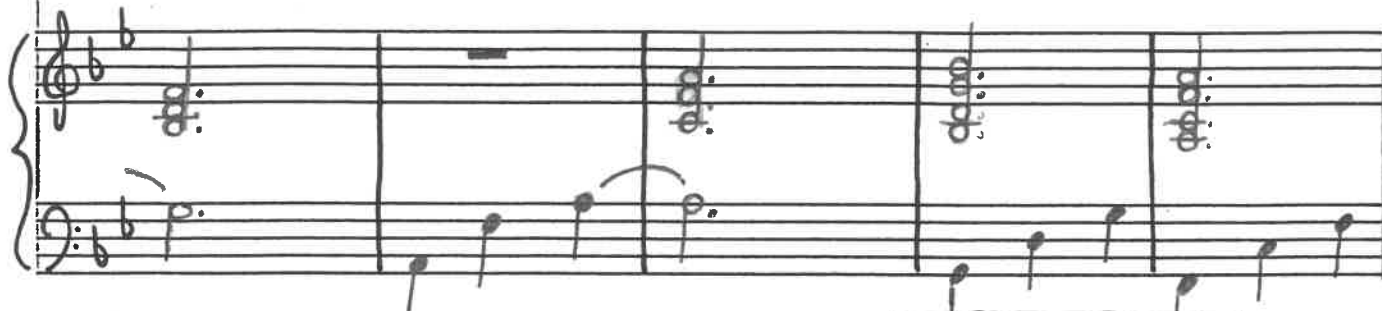
Sometimes it seems like the world's closing in, and the line between  
Who can I turn to and where do I start? - The Savior must  
The Savior's way - of letting us know that there's time to start  
From this day forward, I'll give it my all. - I'll pick myself

Musical notation for the fifth system, including treble and bass staves.

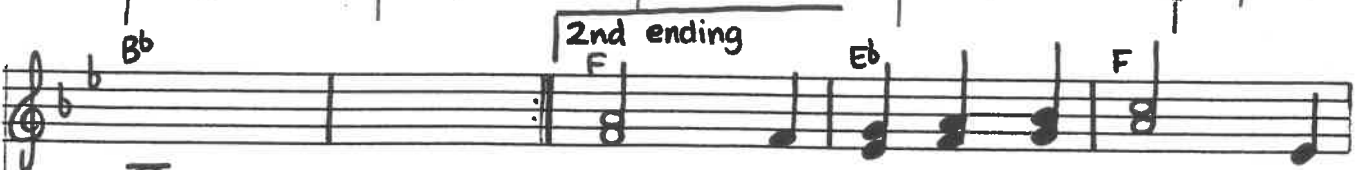
2



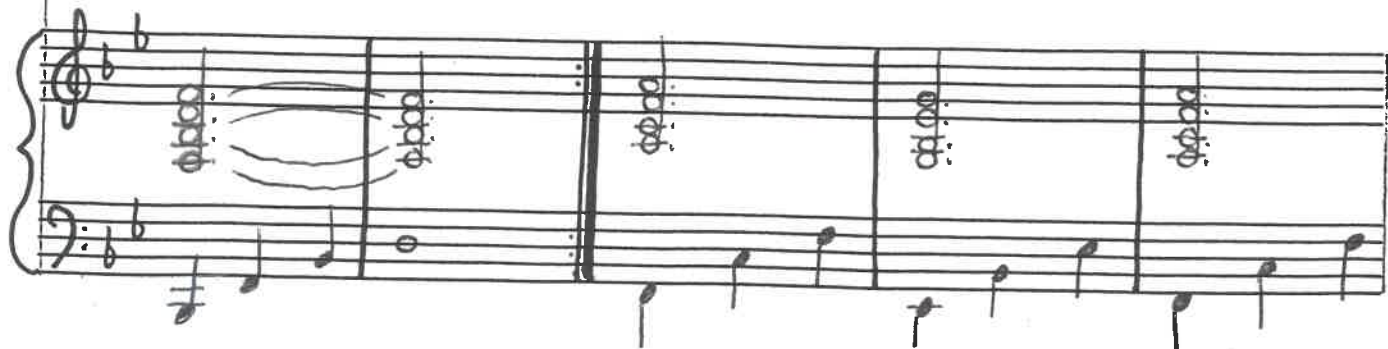
right see fresh, up and wrong has grown thin, - my broken heart. and more room to grow each time I fall, and I think that I simply can't - Down on my knees now, I is by sending the storms and the and I know that the rain only



take one more day, look to the sky, wind and the rain, helps me to grow, I sit by the window, and down comes the with hope in my the trials, the the rain is my



rain. eyes, I realize why the



3

rain has to come, why the wind has to blow; a new be-

-ginning comes at the first sign of the rainbow.

hurt, the fear and the pain. And then after the

④

Musical staff with notes and chords: F/A, Bb, Eb, Bb, Eb

rain, the clouds slowly part, look for the rainbow and

Piano accompaniment for the first system

Musical staff with notes and chords: Eb, F, Bb, Gm

let your new beginning start.

Piano accompaniment for the second system

Musical staff with notes and chords: F/A, Bb, Eb, Bb, Eb

Piano accompaniment for the third system

5

4th ending

B $\flat$  F E $\flat$  B $\flat$  Gm

trials, and my new be- ginning

F E $\flat$  B $\flat$  Gm

is the rainbow.

And so after the

F/A B $\flat$  E $\flat$  B $\flat$  E $\flat$

rain, the clouds slowly part,

look for the rainbow and

6

Chords: Eb, F, Eb, Eb

let your new beginning start. The rain has to

Chords: Bb, Eb, Gm, Eb, Bb

come and the wind has to blow, a new beginning

Chords: Eb, F, Bb, Eb

comes at the first sign of the rainbow look for the rainbow and

7

Handwritten musical notation for a vocal line. The staff is in G major with a key signature of one flat (F major). The notes are: G4 (quarter), A4 (quarter), B4 (quarter), C5 (quarter), B4 (quarter), A4 (quarter), G4 (quarter), and a whole rest. Chord symbols Eb, F, and Bb are written above the staff.

let your new beginning start!

Handwritten piano accompaniment for the first system. The right hand plays chords: Gm, F, and Eb. The left hand plays a bass line: G3, A3, B3, C4, B3, A3, G3.

Chord line for the first system: Gm, F/A, Bb, Eb.

Handwritten piano accompaniment for the second system. The right hand plays chords: Gm, F, Bb, Eb. The left hand plays a bass line: G3, A3, B3, C4, B3, A3, G3.

Chord line for the second system: Bb, Eb, Bb.

Handwritten piano accompaniment for the third system. The right hand plays chords: Gm, F, Bb, Eb. The left hand plays a bass line: G3, A3, B3, C4, B3, A3, G3.