

I Am a Child of God

Handbells 2-3 octaves

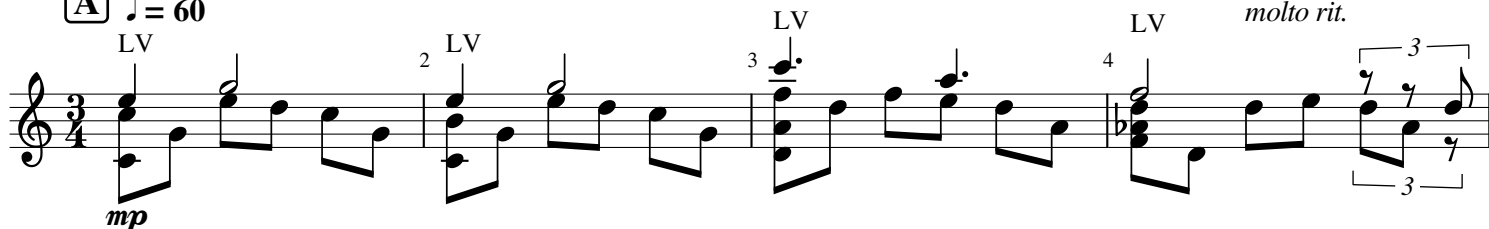
Daniel Lee Gibby

Handbells / Handchimes Used: 16

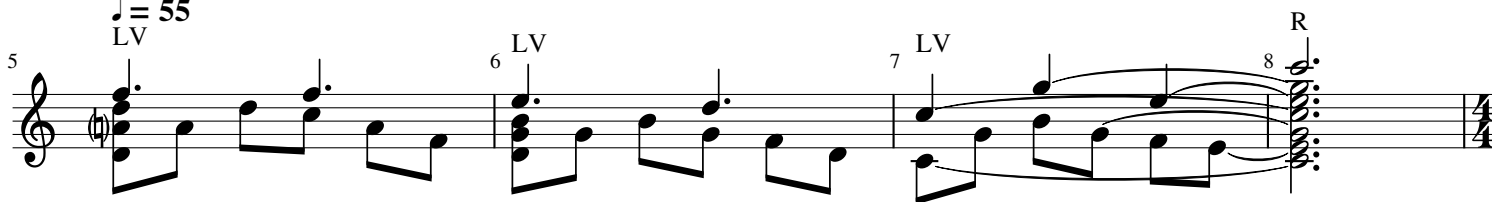


* diamond head notes: play as R instead of LV

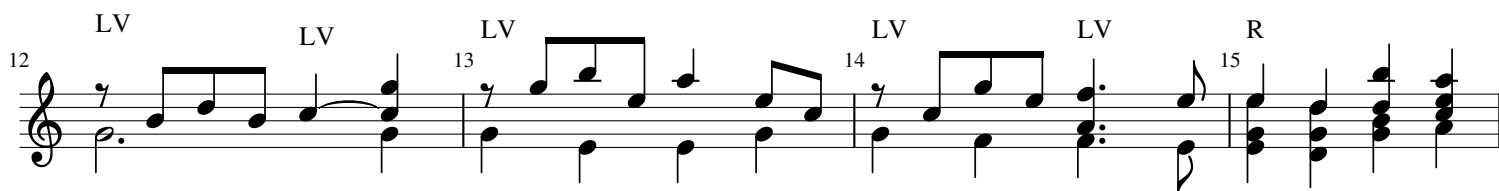
A ♩ = 60



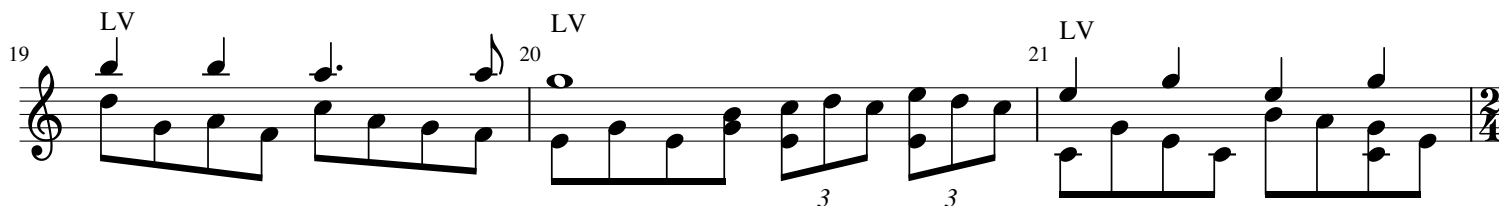
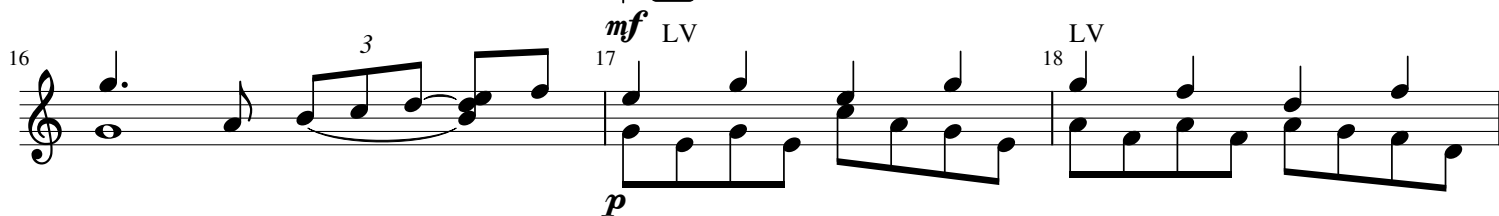
♩ = 55



B ♩ = 70



to Φ **C**



Musical score for a piece, likely a piano or organ work, consisting of seven systems of music. The score includes various performance markings and structural indicators:

- System 1 (Measures 22-25):** Starts with a *rit.* marking. Measure 22 has an LV marking. Measure 23 has a tempo marking of $\text{♩} = 60$. Measure 24 has a tempo marking of $\text{♩} = 65$. Measure 25 has an R marking.
- System 2 (Measures 26-28):** Measure 27 has a boxed letter **D** and a tempo marking of $\text{♩} = 70$. Measure 28 has an LV marking. The dynamic marking *mf* is present below the staff.
- System 3 (Measures 29-31):** Measures 29, 30, and 31 each have an LV marking.
- System 4 (Measures 32-34):** Measures 32, 33, and 34 each have an LV marking.
- System 5 (Measures 35-37):** Measures 35, 36, and 37 each have an LV marking. A boxed letter **E** is placed at the beginning of the system.
- System 6 (Measures 38-40):** Measures 38, 39, and 40 each have an LV marking. A triplet of eighth notes is marked with a '3' below it.
- System 7 (Measures 41-44):** Measures 41, 42, and 43 each have an LV marking. Measure 42 has a *rit.* marking above it. The instruction "D.S. al Coda" is written above the staff. Measure 44 has an LV marking and a Coda symbol.

D.S./Coda repeats/jumps as annotated should go in this order:
 A B C D E B E F