

# Come and See

Soprano Solo

Music: Kevin G. Pace  
Text: Mark R. Fotheringham

Solemnly ♩=84

Piano

7

*mp* 1. From Naz - a - reth, can an - y good come? The

Pno.

13

*mf*

skep - tic would ask when told of the Son. But friends de - clared Mes -

Pno.

19

si - ah was He, En - cour - ag - ing him to "Come and see."

Pno.

25



*p* 2. There were but few who heed - ed His

Pno.

25



*p*

32



voice. He taught them of love, He taught them of choice. Ten lep - ers

*mf*

Pno.

32



*mf*

38



cleansed mir - a - cu - lous - ly, Then went to the priests, said, "Come and

Pno.

38



44

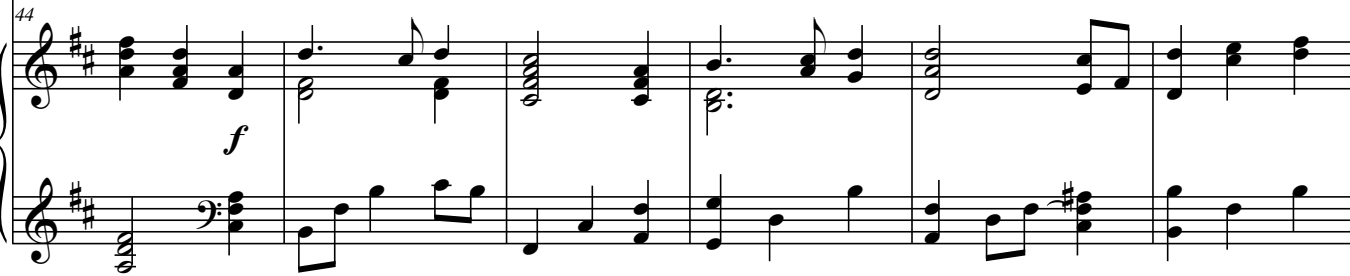


see." The lame now walk, the blind re - ceive sight. He rais - es His

*f*

Pno.

44



*f*

50



hands and of - fers His light, To heal the sick, set cap - tives

Pno.



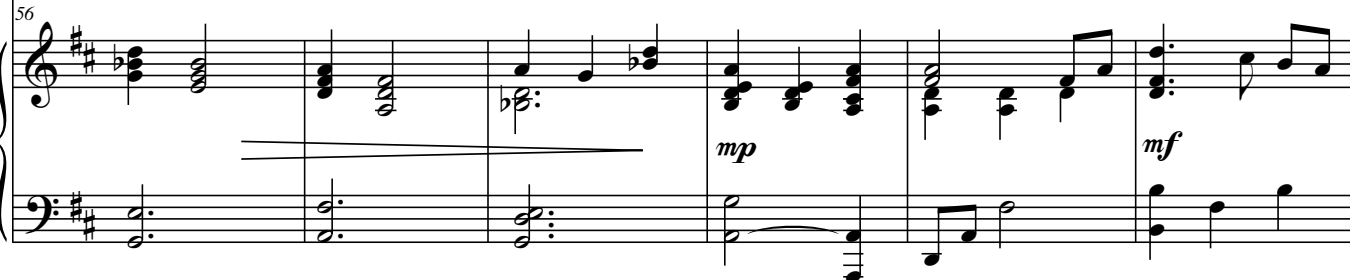
56



free. He is our Sa - vior. Come and see.

*mp*

Pno.



*mp*

*mf*

62



*mp* 3. When Mar - y went to vis - it His

Pno.



*mp*

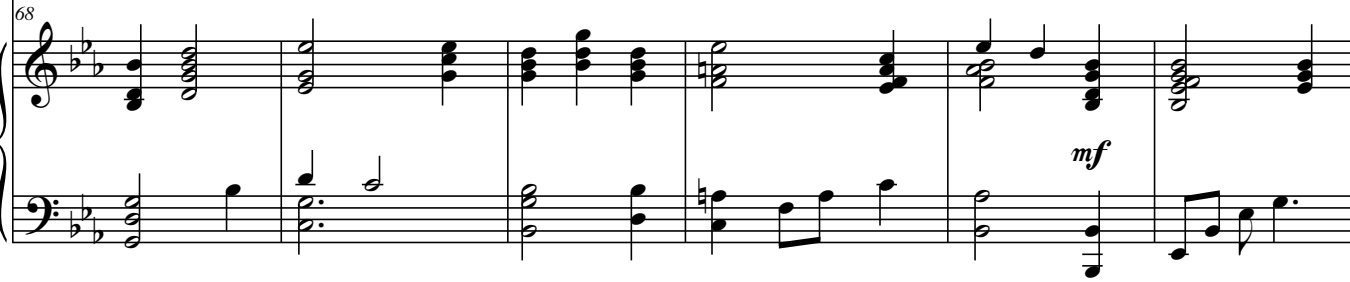
68



tomb She found there the Lord, es - caped from men's doom He spoke her

*mf*

Pno.



*mf*

74

4

Vocal staff for measures 74-79. The melody starts with a half note G4, followed by quarter notes A4, B4, and C5. A fermata is placed over the C5 note. The staff continues with quarter notes B4, A4, G4, F4, E4, D4, and C4.

name for ris - en was He, She told the dis - ci - ples, "Come and

Pno.

Piano accompaniment for measures 74-79. The right hand plays chords in the treble clef, and the left hand plays chords in the bass clef. The music is in a minor key with a 4/4 time signature.

80

*f*

Vocal staff for measures 80-85. The melody begins with a half note G4, followed by quarter notes A4, B4, and C5. A fermata is placed over the C5 note. The staff continues with quarter notes B4, A4, G4, F4, E4, D4, and C4.

see." The lame now walk, the blind re-ceive sight. He rais - es His

Pno.

Piano accompaniment for measures 80-85. The right hand plays chords in the treble clef, and the left hand plays chords in the bass clef. The music is in a minor key with a 4/4 time signature.

86

Vocal staff for measures 86-91. The melody starts with a half note G4, followed by quarter notes A4, B4, and C5. A fermata is placed over the C5 note. The staff continues with quarter notes B4, A4, G4, F4, E4, D4, and C4.

hands and of - fers His light, To heal the sick, set the cap - tives

Pno.

Piano accompaniment for measures 86-91. The right hand plays chords in the treble clef, and the left hand plays chords in the bass clef. The music is in a minor key with a 4/4 time signature.

92

*mp*

Vocal staff for measures 92-97. The melody starts with a half note G4, followed by quarter notes A4, B4, and C5. A fermata is placed over the C5 note. The staff continues with quarter notes B4, A4, G4, F4, E4, D4, and C4.

free. He is our Sa - vior. Come and see.

Pno.

Piano accompaniment for measures 92-97. The right hand plays chords in the treble clef, and the left hand plays chords in the bass clef. The music is in a minor key with a 4/4 time signature.

Pno.

98

Detailed description: This block contains the piano accompaniment for measures 98 through 103. The music is written for a grand piano (Pno.) in a key signature of two flats (B-flat and E-flat). The right hand features a melodic line with eighth and sixteenth notes, while the left hand provides a steady accompaniment with chords and single notes.

Pno.

104

*mp* 4. When you're weighed down by trou - ble or pain, Our Lord will be

104

*mp*

Detailed description: This block contains the vocal line and piano accompaniment for measures 104 through 109. The vocal line begins at measure 104 with the lyrics "4. When you're weighed down by trouble or pain, Our Lord will be". The piano accompaniment starts at measure 104 with a *mp* dynamic. The right hand has a melodic line, and the left hand has a chordal accompaniment.

Pno.

110

*mf*

there to lift you a - gain. He suf - fered in Geth - se - me -

110

*mf*

Detailed description: This block contains the vocal line and piano accompaniment for measures 110 through 115. The vocal line continues with the lyrics "there to lift you a - gain. He suffered in Geth - se - me -". The piano accompaniment starts at measure 110 with a *mf* dynamic. The right hand has a melodic line, and the left hand has a chordal accompaniment.

Pno.

116

*f*

ne To ease all your sor - row. Come and see. The lame now

116

*f*

Detailed description: This block contains the vocal line and piano accompaniment for measures 116 through 121. The vocal line continues with the lyrics "ne To ease all your sor - row. Come and see. The lame now". The piano accompaniment starts at measure 116 with a *f* dynamic. The right hand has a melodic line, and the left hand has a chordal accompaniment.

122

walk, the blind re-ceive sight. He rais - es His hands and of - fers His

Pno.

128

light, To heal the sick, set cap - tives free. He is our

Pno.

*mp*

134

Sa - vior. Come and see.

Pno.