

Silent Night

Recorder Quartet

Franz Gruber

Score

Peacefully ♩ = 80-100

Soprano Recorder

musical notation for Soprano Recorder part, including treble clef, key signature (B-flat), 4/4 time signature, and dynamic marking *mp*.

Peacefully ♩ = 80-100

Alto Recorder

musical notation for Alto Recorder part, including treble clef, key signature (B-flat), 4/4 time signature, and dynamic marking *mp*.

Peacefully ♩ = 80-100

Tenor Recorder

musical notation for Tenor Recorder part, including treble clef, key signature (B-flat), 4/4 time signature, and dynamic marking *mp*.

Peacefully ♩ = 80-100

Bass Recorder

musical notation for Bass Recorder part, including bass clef, key signature (B-flat), 4/4 time signature, and dynamic marking *mp*.

5

S. Rec.

A. Rec.

T. Rec.

B. Rec.

This block contains the first system of music, measures 5 through 8. It features four staves: Soprano Recorder (S. Rec.), Alto Recorder (A. Rec.), Tenor Recorder (T. Rec.), and Bass Recorder (B. Rec.). The music is in 3/4 time and B-flat major. The Soprano part has a melodic line with eighth and quarter notes. The Alto part provides harmonic support with dotted quarter and eighth note patterns. The Tenor part has a steady eighth-note accompaniment. The Bass part plays a simple bass line with quarter and eighth notes. A fermata is placed over the final note of the Soprano part in measure 8.

9

S. Rec.

A. Rec.

T. Rec.

B. Rec.

This block contains the second system of music, measures 9 through 12. It features the same four staves as the first system. The music continues in 3/4 time and B-flat major. The Soprano part has a melodic line with quarter and eighth notes, ending with a repeat sign and a fermata. The Alto part has a similar melodic line with dotted quarter and eighth notes. The Tenor part continues with eighth-note accompaniment. The Bass part plays a simple bass line with quarter and eighth notes. A fermata is placed over the final note of the Soprano part in measure 12.

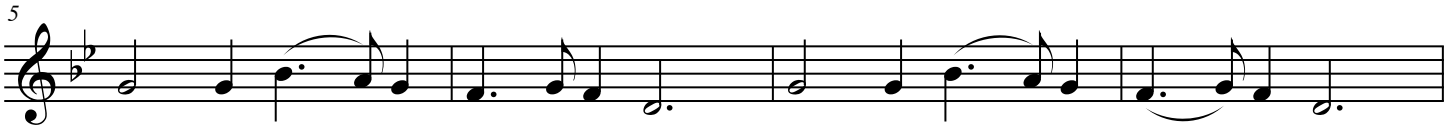
Silent Night

Recorder Quartet

Franz Gruber

Soprano Recorder

Peacefully ♩ = 80-100



Silent Night

Recorder Quartet

Franz Gruber

Alto Recorder

Peacefully ♩ = 80-100

mp

5

9

Silent Night

Recorder Quartet

Franz Gruber

Tenor Recorder

Peacefully ♩ = 80-100

mp

5

9

Silent Night

Recorder Quartet

Franz Gruber

Bass Recorder

Peacefully ♩ = 80-100

The first staff of music is in bass clef, 6/4 time signature, and B-flat major. It begins with a repeat sign. The first four measures contain the following notes: G2 (half), F2 (half), G2 (half), A2 (half). The next four measures contain: G2 (half), F2 (half), G2 (half), A2 (half). The final four measures contain: G2 (half), F2 (half), G2 (half), A2 (half).

mp

5

The second staff of music continues from the first. It contains four measures with the following notes: G2 (half), F2 (half), G2 (half), A2 (half). The next four measures contain: G2 (half), F2 (half), G2 (half), A2 (half). The final four measures contain: G2 (half), F2 (half), G2 (half), A2 (half).

9

The third staff of music continues from the second. It contains four measures with the following notes: G2 (half), F2 (half), G2 (half), A2 (half). The next four measures contain: G2 (half), F2 (half), G2 (half), A2 (half). The final four measures contain: G2 (half), F2 (half), G2 (half), A2 (half), ending with a double bar line and repeat dots.