

# Gethsemane

Words & Music by  
Melanie M. Hoffman

Arranged by Chelsey Joy

Additional lyrics by  
Jonathan Puri

*Tenderly* *mf*

Je - sus

*mf* *rit.*

5 *a tempo*

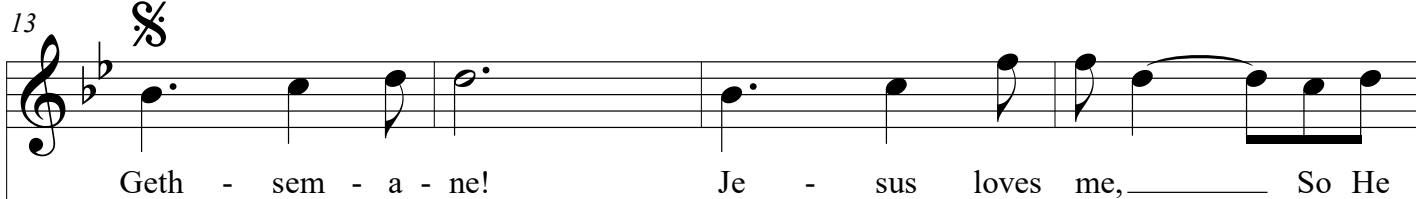
climbed the hill to the Gar - den still; His steps were heav - y and slow.

*mp*

9 Love and a prayer took Him there to the place on-ly He could go.

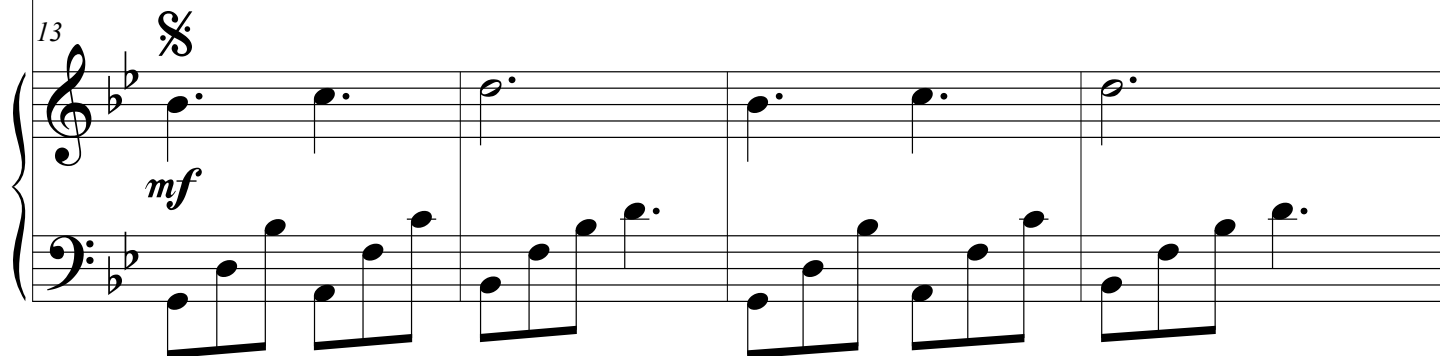
9

13



Geth - sem - a - ne! Je - sus loves me, So He

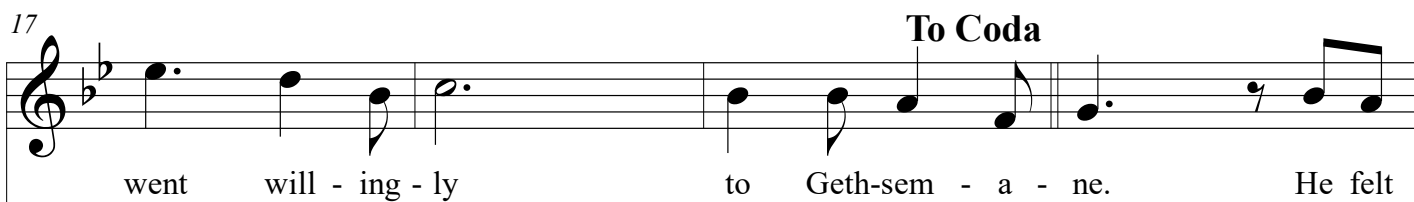
13



*mf*

17

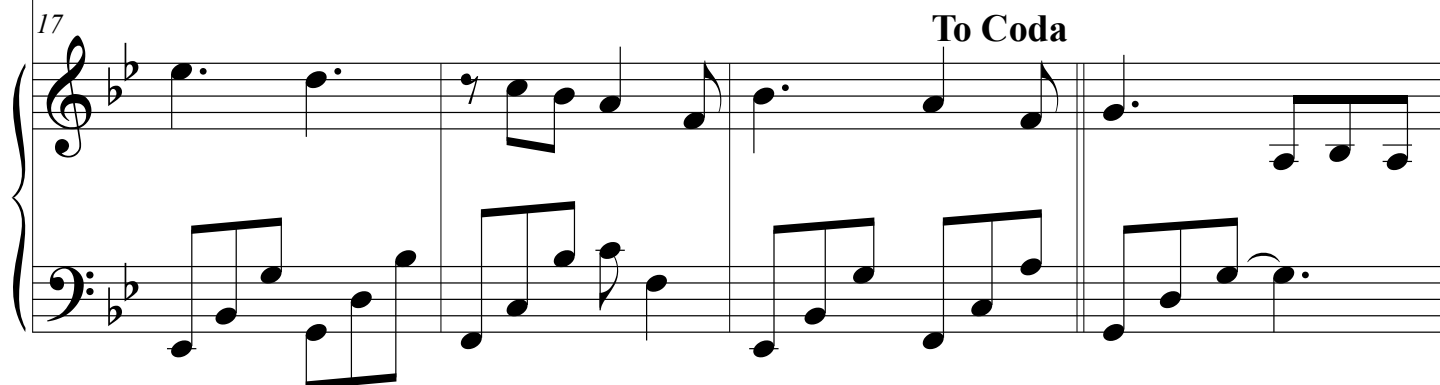
To Coda



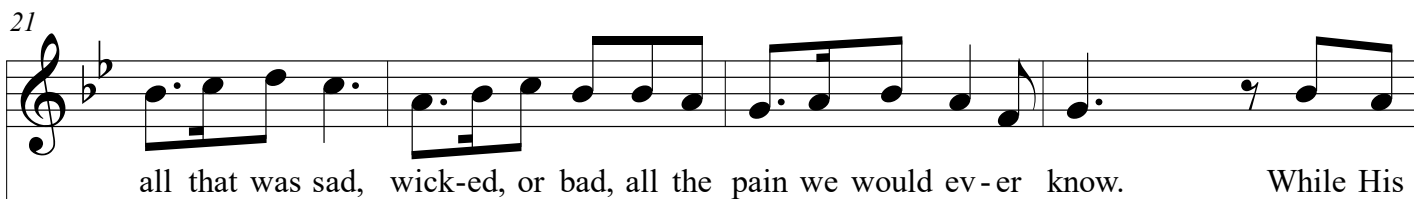
went will - ing - ly to Geth-sem - a - ne. He felt

17

To Coda



21



all that was sad, wick-ed, or bad, all the pain we would ev - er know. While His

21



25

D.S. al Coda

friends were a - sleep, He fought to keep His promi - se made long a - go.

This system contains measures 25 through 28. It features a single melodic line in treble clef with a key signature of two flats (B-flat and E-flat). The lyrics are written below the notes.

25

D.S. al Coda

This system contains measures 25 through 28. It features a piano accompaniment with both treble and bass staves. The music consists of block chords and simple melodic fragments in the right hand, and sustained chords in the left hand.

29

This system contains measures 29 through 32. The vocal line begins with a whole rest in measure 29, followed by a whole note in measure 30, and then rests in measures 31 and 32. The lyrics "ne." and "The" are positioned above measures 29 and 30 respectively.

ne.

The

29

This system contains measures 29 through 32. The piano accompaniment continues with chords and melodic lines in both hands, supporting the vocal part.

34

hard - est thing that ev - er was done, The great - est pain that ev - er was known, The

This system contains measures 34 through 37. The vocal line continues with a melodic phrase across all four measures. The lyrics are written below the notes.

34

This system contains measures 34 through 37. The piano accompaniment continues with chords and melodic lines in both hands, supporting the vocal part.

# Gethsemane

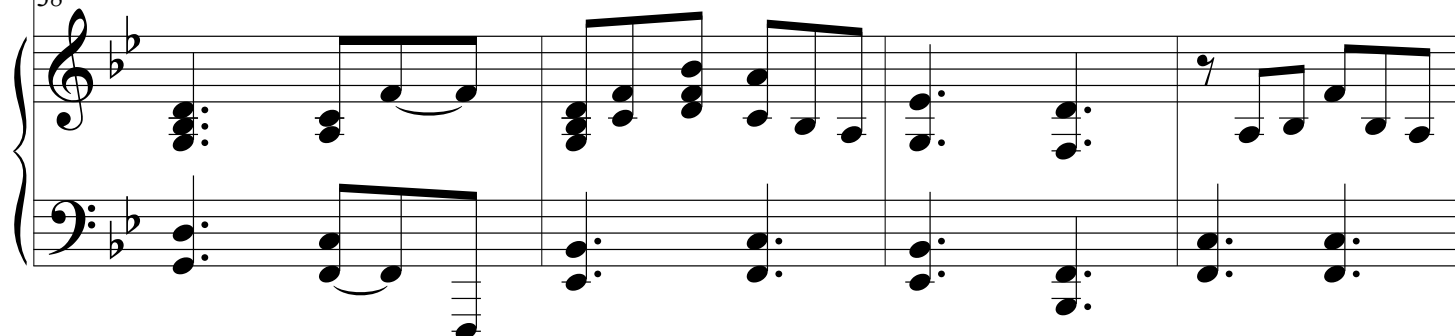
4

38

*growing in intensity*



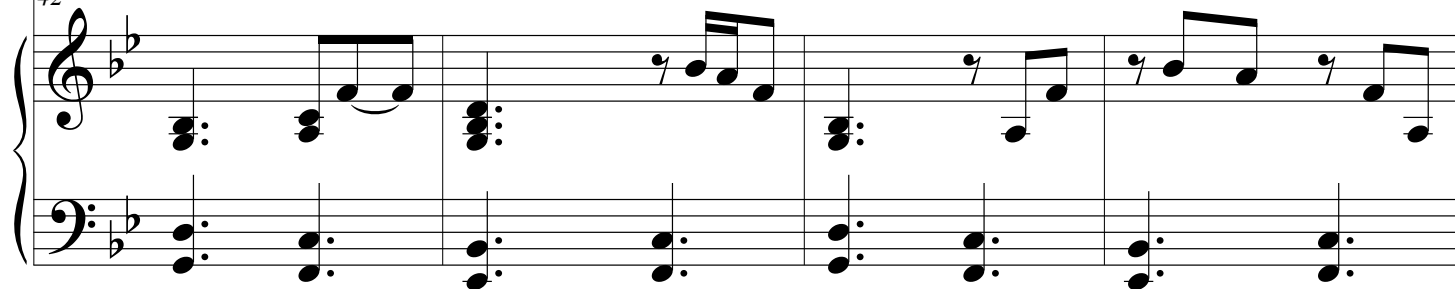
38



42



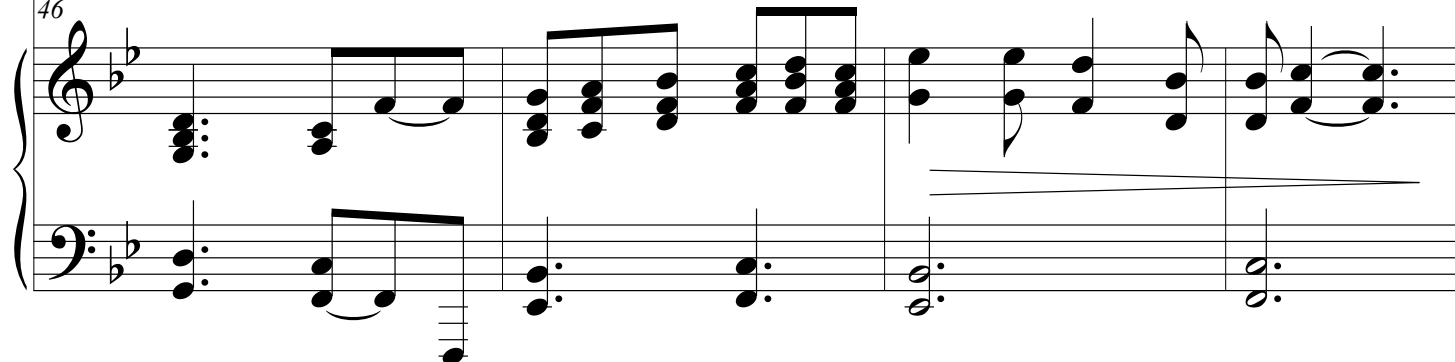
42



46



46



50 *ff*

This was done by Je - sus! \_\_\_\_\_ Geth - sem - a - ne!

50 *pp*

54

Je - sus loves me, \_\_\_\_\_ So He gave this gift to me

54

58

in Geth-sem - a - ne. Geth - sem - a - ne!

58

## Gethsemane

6

62

Je - sus loves me, \_\_\_\_\_ So He gives this gift to me

This system contains measures 62 through 65. The vocal line (treble clef) begins with a half note G4, followed by quarter notes A4, Bb4, and C5, then a half note D5. The piano accompaniment (grand staff) features a descending eighth-note line in the right hand and a more active bass line. Measures 63-65 show the vocal line holding a whole note D5 while the piano accompaniment provides harmonic support with chords and moving lines.

66

*rit.*

from Geth - sem - a - ne.

This system contains measures 66 and 67, marked with a *rit.* (ritardando) instruction. The vocal line (treble clef) has a half note G4, a quarter note A4, a half note Bb4, and a whole note C5. The piano accompaniment (grand staff) features a steady eighth-note accompaniment in the right hand and a bass line with some rests. Measure 67 includes a fermata over the vocal line.

68

This system contains measures 68 and 69. Measure 68 shows the vocal line (treble clef) with a whole rest. The piano accompaniment (grand staff) continues with eighth-note patterns. Measure 69 features a final cadence with a whole note chord in the right hand and a half note chord in the left hand, both held with fermatas.