

I'll Go Where You Want Me to Go

SATB with Piano Accompaniment

Music by Carrie E. Rounsefell
Text by Mary Brown

Arranged by
AnnMarie Murdock

Resolutely ♩. = 48-58

SATB

Piano

mp It may not be on the

mp *rit.*

6

SATB

Pno.

moun-tain height Or o-ver the storm-y sea, It may not be at the bat-tle's front My

11

SATB

Pno.

Lord will have need of me But if, by a still, small voice he calls To

15

SATB

paths that I do not know, I'll an - swer, dear Lord, with my hand in thine: I'll

Pno.

mf

19

SATB

go where you want me to go. I'll go where you want me to go, dear Lord, o-ver

Pno.

23

SATB

moun - tain or plain or sea; I'll say what you want me to say, dear Lord; I'll

Pno.

27

SATB

be what you want me to be.

Pno.

mp

mp
Per -

32

SATB

haps to-day there are lov - ing words Which Je - sus would have me speak; There

Pno.

36

SATB

may be now in the paths of sin some wan - d'rer whom I should seek. O

Pno.

p
Oo

mf
O

40

SATB

Pno.

mf

Sav - ior, if thou wilt be my guide, Tho dark and rug - ged the way, My

Oo

44

SATB

Pno.

voice shall ech - o the mes - sage sweet: I'll say what you want me to say.

Oo

I'll

48

SATB

Pno.

go where you want me to go, dear Lord, O-ver moun - tain or plain or sea; I'll

52

SATB

say what you want me to say, dear Lord; I'll be what you want me to be.

Pno.

56

SATB

f There's sure - ly some - where a

Pno.

ten. *rit.* *f*

8

61

SATB

low - ly place In earth's har-vest fields so wide Where I may la - bor through

Pno.

65

SATB

life's short day For Je - sus, the Cru - ci - fied. So trust - ing my all to thy

mp

Pno.

69

SATB

ten - der care, and know - ing thou lov - est me, I'll

Pno.

72

SATB

do thy will with a heart sin - cere; I'll be what you want me to be. I'll

mf *f*

Pno.

76

SATB

go where you want me to go, dear Lord, O-ver moun - tain or plain or sea; I'll

Pno.

8^{va} 8^{va} 8^{va} 8^{va} 8^{va} 8^{va} 8^{va}

80

SATB

say what you want me to say, dear Lord; I'll be what you want me to be. I'll

ff *mp* *p*

rit.

Pno.

ff *rit.* *mp*

84

SATB

be what you want me to be.

rit.

Pno.

p rit. *mp a tempo* *rit.*

I'll Go Where You Want Me to Go**VERSE 1**

Women melody It may not be on the mountain height
Or over the stormy sea,
It may not be at the battle's front
My Lord will have need of me.

S.A. parts But if, by a still, small voice he calls
To paths that I do not know,
I'll answer, dear Lord, with my hand in thine:
I'll go where you want me to go.

CHORUS:

S.A.T. B. parts I'll go where you want me to go, dear Lord,
Over mountain or plain or sea;
I'll say what you want me to say, dear Lord;
I'll be what you want me to be.

VERSE 2

Men melody Perhaps today there are loving words
Which Jesus would have me speak;
There may be now in the paths of sin
Some wand'rer whom I should seek.

Men melody/Wom. alto part, sing "oo" O Savior, if thou wilt be my guide,
Tho dark and rugged the way,
My voice shall echo the message sweet:
I'll say what you want me to say.

S.A.T. B. parts CHORUS

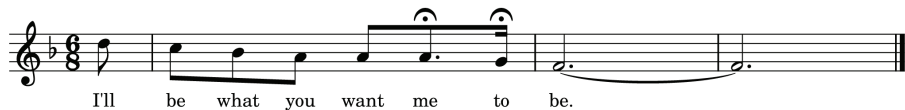
VERSE 3

ALL melody There's surely somewhere a lowly place
In earth's harvest fields so wide
Where I may labor through life's short day
For Jesus, the Crucified.

So trusting my all to thy tender care,
And knowing thou lovest me,
I'll do thy will with a heart sincere:
I'll be what you want me to be.

S.A.T. B. parts CHORUS

ALL melody ENDING (see below)

**I'll Go Where You Want Me to Go****VERSE 1**

Women melody It may not be on the mountain height
Or over the stormy sea,
It may not be at the battle's front
My Lord will have need of me.

S.A. parts But if, by a still, small voice he calls
To paths that I do not know,
I'll answer, dear Lord, with my hand in thine:
I'll go where you want me to go.

CHORUS

S.A.T. B. parts I'll go where you want me to go, dear Lord,
Over mountain or plain or sea;
I'll say what you want me to say, dear Lord;
I'll be what you want me to be.

VERSE 2

Men melody Perhaps today there are loving words
Which Jesus would have me speak;
There may be now in the paths of sin
Some wand'rer whom I should seek.

Men melody/Wom. alto part, sing "oo" O Savior, if thou wilt be my guide,
Tho dark and rugged the way,
My voice shall echo the message sweet:
I'll say what you want me to say.

S.A.T. B. parts CHORUS

VERSE 3

ALL melody There's surely somewhere a lowly place
In earth's harvest fields so wide
Where I may labor through life's short day
For Jesus, the Crucified.

So trusting my all to thy tender care,
And knowing thou lovest me,
I'll do thy will with a heart sincere:
I'll be what you want me to be.

S.A.T. B. parts CHORUS

ALL melody ENDING (see below)

